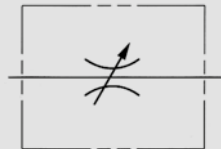


AVAILABLE SIZES

DN6 - DN30 (1/4" to 1 1/4")

PORTING PATTERN



ACCESSORIES ON REQUEST

- Panel mounting kit page 209

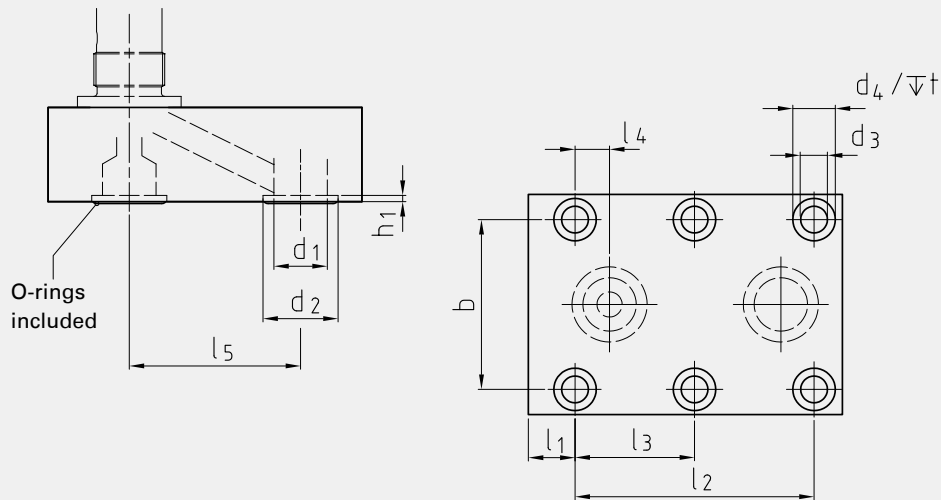
MATERIAL CODE DESCRIPTION

Materials	1A	18
Body	Steel	Steel
O-rings	NBR	FPM
Tmin / Tmax	-20°C / 100°C	-20°C / 100°C

GENERAL DIMENSIONS

Type	H ₁	H ₂	h	B	l	L	D	G	Weight [kg]
NDVP-DN6	59	64	16	41,5	9,5	35	24	Pg 7	0,20
NDVP-DN8	72	79	20	46	12	47,5	29	Pg 11	0,40
NDVP-DN10	78	84	25	51	14	51	29	Pg 11	0,60
NDVP-DN12	89	100	25	57,5	22,5	75	38	Pg 16	1,00
NDVP-DN16	103	113	30	70	19,5	93,5	38	Pg 16	1,50
NDVP-DN20	142	154	45	76,5	31,5	111	49	Pg 29	3,40
NDVP-DN25	142	154	45	100	49	143	49	Pg 29	5,15
NDVP-DN30	147	159	50	115	39	171	49	Pg 29	7,50

ASSEMBLY DIMENSIONS



ASSEMBLY DIMENSIONS

ORDER CODE PER MATERIAL COMBINATION

Type	b	l ₁	l ₂	l ₃	l ₄	l ₅	d ₁	d ₂	h ₁	d ₃	d ₄	t	Dimension of screws (min) ⁽¹⁾	Torque of screws in Nm ⁽¹⁾	O-ring	PN [bar]	1A	18
NDVP-DN6	28,5	8	19	-	1,5	16	5	9,8	1,2	6,5	10,5	6,8	4 x M6x20 - 8.8	9	6,35x1,78	350	33580*	37734*
NDVP-DN8	33,5	6,5	35	-	4,5	25,5	7	12,4	1,5	6,5	10,5	6,8	4 x M6x25 - 8.8	9	8,5x2	350	13850*	37735*
NDVP-DN10	38	8,5	33,5	-	4,2	25,5	10	15,7	1,4	6,5	10,5	6,8	4 x M6x30 - 10.9	12	12x2	350	20313*	37736*
NDVP-DN12	44,5	18,5	38	-	4	30	13	18,7	1,4	6,5	10,5	6,8	4 x M6x30 - 12.9	14	15x2	350	16776*	37737*
NDVP-DN16	54	8,5	76	38	11	54,5	17	23,9	2	8,5	13,5	9	6 x M8x35 - 10.9	30	19x2,5	350	13852*	37738*
NDVP-DN20	60	8	95	47,5	19	57	22	30,5	2,2	8,5	13,5	9	6 x M8x50 - 12.9	35	25x3	350	33218*	22728*
NDVP-DN25	76	11	120,5	60	21	79,5	28,5	37,5	2,2	10,5	16,5	11	6 x M10x50 - 12.9	70	32x3	350	31132*	37739*
NDVP-DN30	92	15	143	71,5	24	95	35	43,5	2,2	13	19	13	6 x M12x60 - 10.9	100	38x3	350	32561*	37740*

⁽¹⁾ Fixing screws not included.

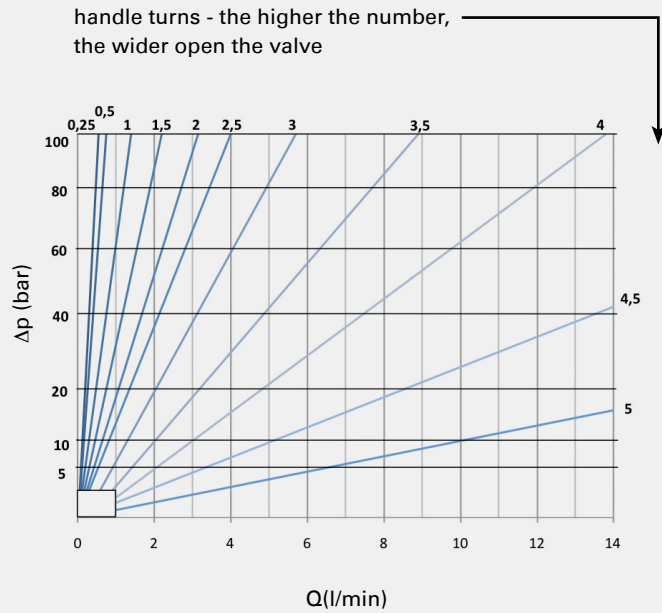
*Article usually in stock.

We recommend screws as per ISO4762 (DIN 912). The indicated property classes and torques represent our recommended guidelines at a friction coefficient of 14%.

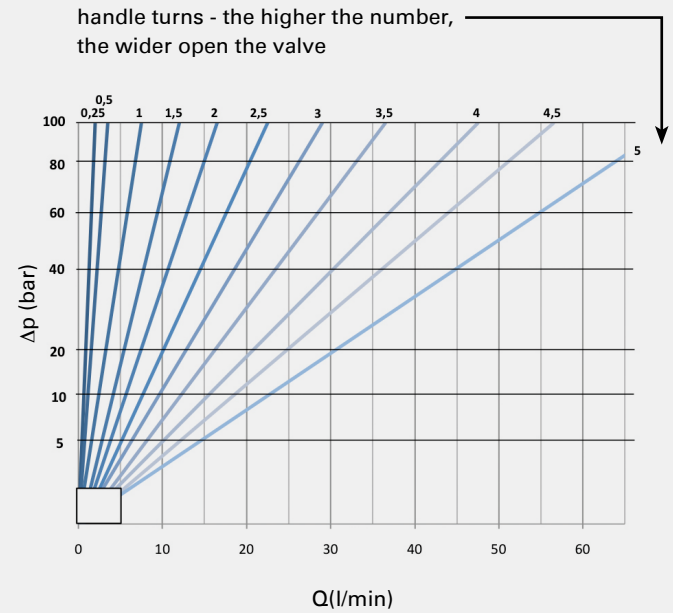
⚠ Flow control valves should not be used as shut-off device. Small leakage rates may occur in fully closed position. (DIN EN 12266 – leakage rate A-B – test medium water)

The flow values are valid for hydraulic oil (spissitude 880 kg/m³) and the kinematic viscosity ν of 35 mm²/s.

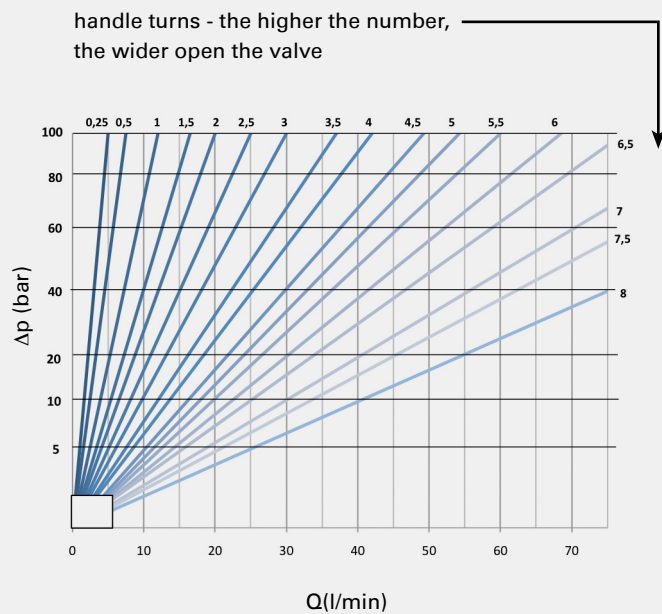
NDV/NDRV/NDVP/NDRVP-DN6



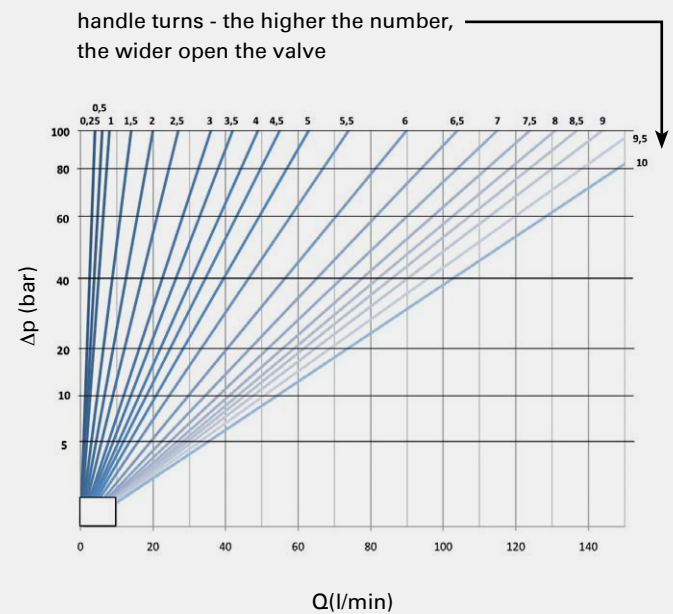
NDV/NDRV/NDVP/NDRVP-DN8



NDV/NDRV/NDVP/NDRVP-DN10



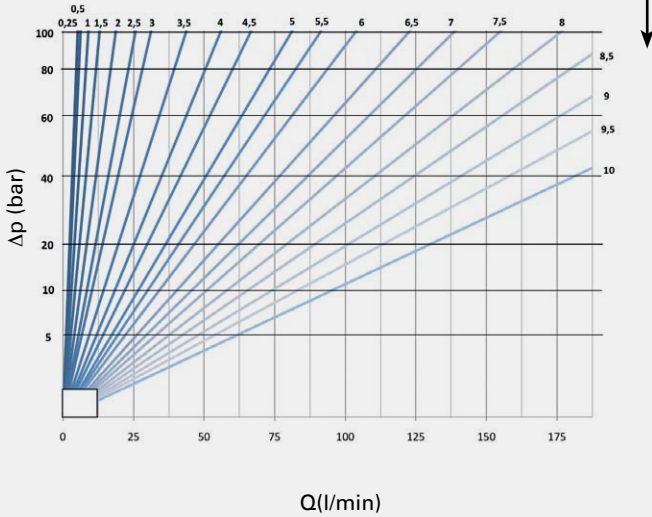
NDV/NDRV/NDVP/NDRVP-DN12



The flow values are valid for hydraulic oil (spissitude 880 kg/m³) and the kinematic viscosity ν of 35 mm²/s.

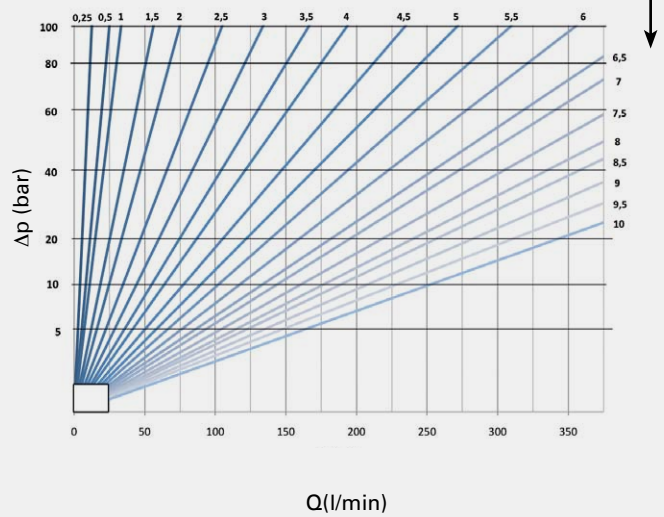
NDV/NDRV/NDVP/NDRVP-DN16

handle turns - the higher the number, the wider open the valve



NDV/NDRV/NDVP/NDRVP-DN20/25/30/40

handle turns - the higher the number, the wider open the valve



NDRV/NDRVP-DN6 - DN40

Flow direction: B-A

Δp characteristic line free flow through check valve

