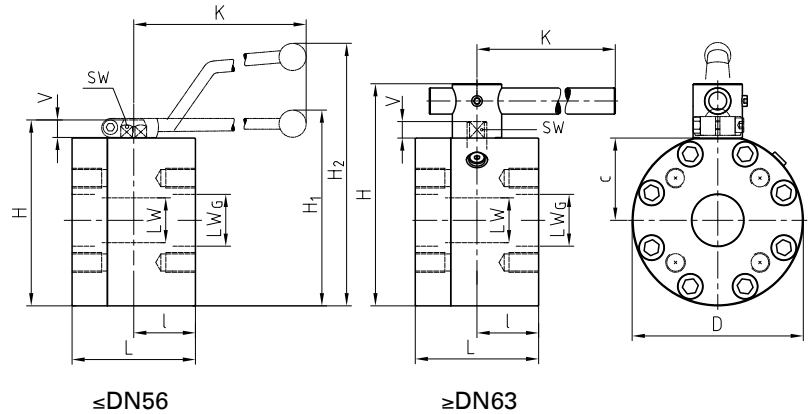


# Flange ball valve with ISO connection Stainless Steel

KH-ISO



## AVAILABLE SIZES

DN13 - DN200 (1/2" to 8")

## CONNECTIONS

ISO 6164-1 (ISO250), ISO 6164-2 (ISO400), ISO320 (not part of ISO 6164)

## ACCESSORIES ON REQUEST

- Locking devices page 222 - 226
- Actuators 220 - 221
- Mounting holes on request
- Position switches on request
- Combinations on request
- Detent on request

## MATERIAL CODE DESCRIPTION

Materials	442A	4428
Body	Stainless Steel	Stainless Steel
Ball	Stainless Steel	Stainless Steel
Stem	Stainless Steel	Stainless Steel
Ball seats	POM	POM
O-rings	NBR	FPM
Tmin / Tmax	-10°C / 100°C	-10°C / 100°C

## GENERAL DIMENSIONS ISO 6164-1 (ISO250)

Type	LW	LW <sub>G</sub>	L	I	D	H	c	V	K	SW	H <sub>1</sub>	H <sub>2</sub>	Lever
KH-DN13	15	15	85	45	78	83	31	13	160	12	-	127	Al
KH-DN19	20	20	88	38	119	110	36,5	14	200	14	114	-	Zn
KH-DN25	25	25	88	38	126	117	39,5	14	200	14	120	-	Zn
KH-DN32	32	32	105	50	145	158	68	17	320	17	167	-	Al
KH-DN38	38	38	110	55	165	178	78	17	320	17	187	-	Al
KH-DN51	48	47	116	58	198	210	94	17	320	17	219	-	Al
KH-DN56	48	58	123	58	198	210	94	17	320	17	219	-	Al
KH-DN63	63	70	150	75	208	270	100	20	600	16	-	-	St <sup>(1)</sup>

## GENERAL DIMENSIONS ISO 6164-2 (ISO400)

Type	LW	LW <sub>G</sub>	L	I	D	H	c	V	K	SW	H <sub>1</sub>	H <sub>2</sub>	Lever
KH-DN13	15	14	85	45	78	83	31	13	160	12	-	127	Al
KH-DN19	20	18	88	38	119	110	36,5	14	200	14	114	-	Zn
KH-DN25	25	22	88	38	126	117	39,5	14	200	14	120	-	Zn
KH-DN32	32	29	105	50	145	158	68	17	320	17	167	-	Al
KH-DN38	38	35	110	55	165	178	78	17	320	17	187	-	Al
KH-DN51	48	43	123	58	198	210	94	17	320	17	219	-	Al
KH-DN56	48	53	123	58	198	210	94	17	320	17	219	-	Al
KH-DN63	65	58	150	75	224	286	108	20	600	16	-	-	St <sup>(1)</sup>
KH-DN70	65	63	150	75	224	286	108	20	600	16	-	-	St <sup>(1)</sup>
KH-DN80 (PN100)	76	74	140	70	228	293	107	26	600	19	-	-	St <sup>(1)</sup>
KH-DN80 (PN400)	76	76	170	78	258	315	114,5	26	600	19	-	-	St <sup>(1)</sup>

Please note the pressure ratings of the connection flanges!

<sup>(1)</sup> Lever must be fixed centrally during operation. In case of vibration the handle may otherwise operate the valve by itself.

### GENERAL DIMENSIONS ISO 320 (not part of ISO 6164)



Type	LW	LW <sub>G</sub>	L	I	D	H	c	V	K	SW	H <sub>1</sub>	H <sub>2</sub>	Lever
KH-DN15													
													on request
KH-DN20	20	20	88	38	119	110	36,5	14	200	14	114	-	Zn
KH-DN25	25	25	88	38	126	117	39,5	14	200	14	120	-	Zn
KH-DN32	32	32	105	50	145	158	68	17	320	17	167	-	Al
KH-DN40	38	38	110	55	165	178	78	17	320	17	187	-	Al
KH-DN50	48	48	122	58	198	210	94	17	320	17	219	-	Al
KH-DN65	65	63	150	75	208	270	100	20	600	16	-	-	St <sup>(1)</sup>
KH-DN80 (PN100)	76	76	140	70	215	279	100	26	600	19	-	-	St <sup>(1)</sup>
KH-DN80 (PN350)	76	76											refer to KH-DN80-ISO400 (PN400)
KH-DN100	100	100	200	100	260	327	122	26	900	24	-	-	St <sup>(1)</sup>
KH-DN125	118	118	230	110	390	470	185	32	900	36	-	-	St <sup>(1)</sup>
KH-DN150	150	150	285	130	390	475	190	32	900	36	-	-	St <sup>(1)</sup>
KH-DN200	192	200	378	150	456	598	223	61	940	46	-	-	St <sup>(1)</sup>

Please note the pressure ratings of the connection flanges!

<sup>(1)</sup> Lever must be fixed centrally during operation. In case of vibration the handle may otherwise operate the valve by itself.

# Flange ball valve with ISO connection Stainless Steel

## KH-ISO

### CONNECTION TYPE

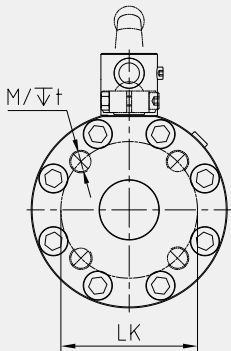
### DIMENSIONS

### ORDER CODE PER MATERIAL COMBINATION

ISO 6164-1

Type	LK	M	t	Weight [Kg]
------	----	---	---	-------------

PN [bar]	442A	4428
----------	------	------



KH-DN13-ISO250	42 <sup>(1)</sup>	4 x M8	16	2,90	350	37489	37494
KH-DN19-ISO250	50	4 x M8	15	6,80	350	37490	37495
KH-DN25-ISO250	62	4 x M10	20	7,20	315	37491	37496
KH-DN32-ISO250	73	4 x M12	21	12,50	250	37492	37497
KH-DN38-ISO250	85	4 x M16	24,5	16,60	250	37493	37498
KH-DN51-ISO250	98	4 x M16	25,5	24,90	250	37840	37499
KH-DN56-ISO250	118	4 x M20	33	26,60	250	37841	37500
KH-DN63-ISO250	145	4 x M20	33	36,90	250	35873	37501

### CONNECTION TYPE

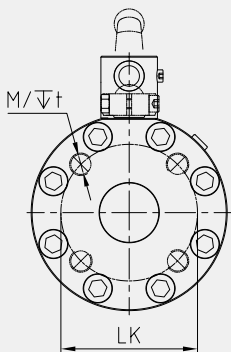
### DIMENSIONS

### ORDER CODE PER MATERIAL COMBINATION

ISO 6164-2

Type	LK	M	t	Weight [Kg]
------	----	---	---	-------------

PN [bar]	442A	4428
----------	------	------



KH-DN13-ISO400	42 <sup>(1)</sup>	4 x M8	16	2,90	400	37858	37868
KH-DN19-ISO400	50	4 x M8	15	6,80	400	37859	37869
KH-DN25-ISO400	62	4 x M10	20	7,20	400	37860	37870
KH-DN32-ISO400	73	4 x M12	21	12,50	400	37861	37871
KH-DN38-ISO400	85	4 x M16	24,5	16,60	400	37862	37872
KH-DN51-ISO400	98	4 x M16	25,5	24,90	400	37863	37873
KH-DN56-ISO400	118	4 x M20	31	26,60	400	37864	37874
KH-DN63-ISO400	145	4 x M24	37,5	42,53	400	37865	37875
KH-DN70-ISO400	160	4 x M24	37,5	43,00	315	37866	37876
KH-DN80-ISO400 (PN100)	175	4 x M30	35	51,00	100	37867	37877
KH-DN80-ISO400 (PN400)	175	4 x M30	35	63,00	400	58190	58111

### CONNECTION TYPE

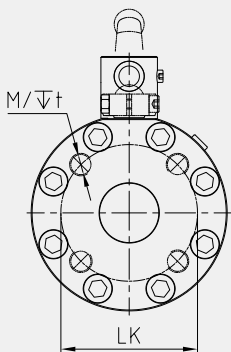
### DIMENSIONS

### ORDER CODE PER MATERIAL COMBINATION

ISO 320  
(NOT PART OF ISO 6164)

Type	LK	M	t	Weight [Kg]
------	----	---	---	-------------

PN [bar]	442A	4428
----------	------	------



KH-DN15-ISO320	54	4 x M10		on request	350	37833	37836
KH-DN20-ISO320	64	4 x M12	22	6,80	350	37469	37474
KH-DN25-ISO320	72	4 x M12	20	7,20	350	37834	37837
KH-DN32-ISO320	80	4 x M16	24	12,50	350	37470	37475
KH-DN40-ISO320	98	4 x M16	25	16,60	350	37471	37476
KH-DN50-ISO320	118	4 x M20	28	24,90	350	37472	37477
KH-DN65-ISO320	145	4 x M24	36	36,00	350	20043	37478
KH-DN80-ISO320 (PN100)	175	4 x M30	35	34,26	100	32608	31684
KH-DN100-ISO320	200	8 x M24	36	70,00	350	37473	37479
KH-DN125-ISO320	245	8 x M30	45	209,00	350	37835	37838
KH-DN150-ISO320	245	8 x M30	46	225,00	350	41963	41964
KH-DN200-ISO320	315	8 x M36	55	395,00	350	41966	41967

<sup>(1)</sup> rotated by 45°

### BYPASS OPTION



When larger ball valves have to be activated at full differential pressure, a smaller ball valve can be used before activation in order to equalize the pressure.

We combine the bypass within the flange valve body to provide less leakage points compared to a piped solution.

- Both main and bypass valve can be offered with locking device or any other accessory like limit switches or actuators.
- Bypass is a standard manifold mounting PKH valve which can be easily maintained or replaced
- Bypass manifold mounting valve provides bubble tight shut off.